

# Hydraulics Network



## MONOBLOCK VALVES

# 2023



OIL SOLUTIONS

PO Box 38  
Strathfieldsaye, VIC, 3551  
1800 OIL SOL  
1800 645 765

[sales@oilsolutions.com.au](mailto:sales@oilsolutions.com.au)

[www.oilsolutions.com.au](http://www.oilsolutions.com.au)

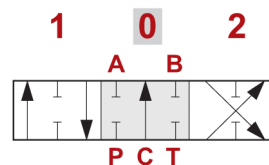
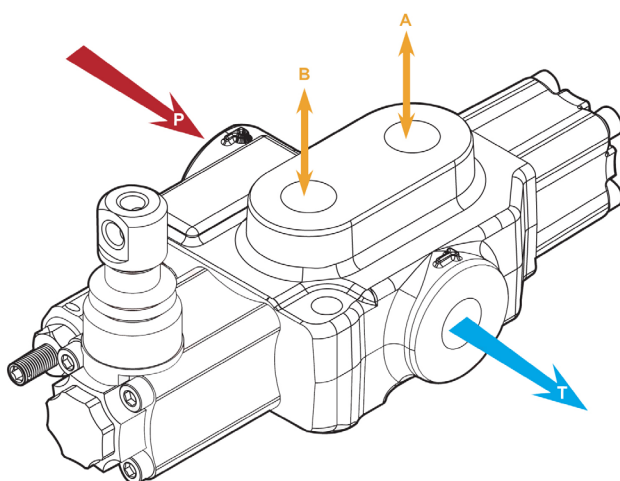
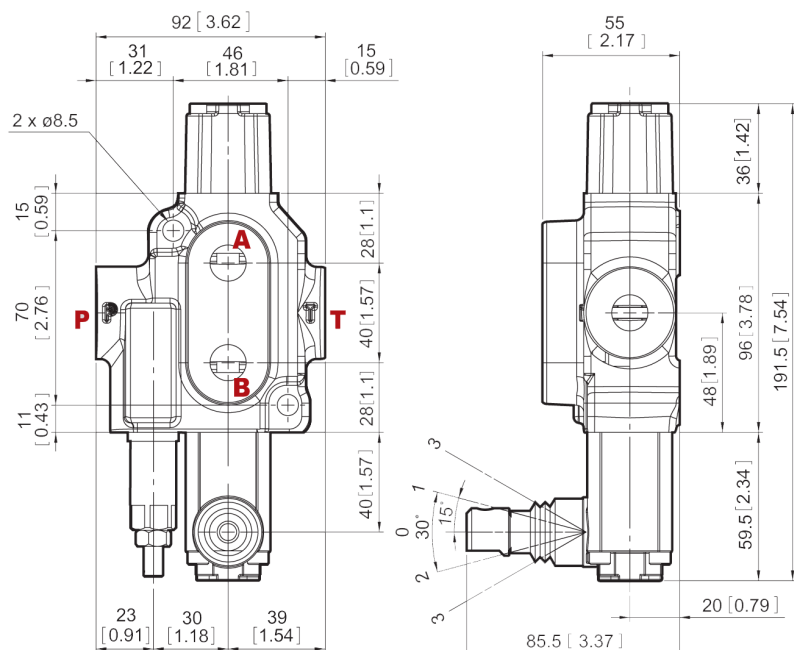
"For All Your Hydraulic Needs"

# MONOBLOCK VALVES

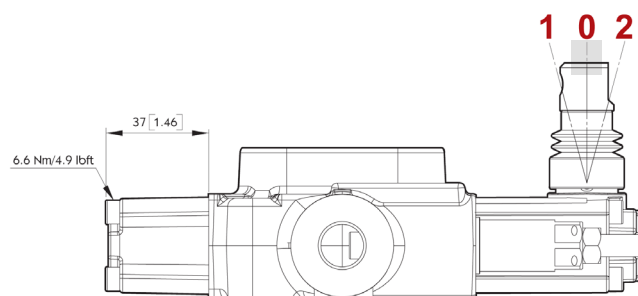
## MB2 (45 LPM)

### MB2 Monoblock

Part #	List Price \$	Spool	Quantity	Max Flow	Max Pressure		Ports
					P	T	
MB2/1S3/18L/G3-M3		Cylinder	1	45 lpm	250 bar	25 bar	3/8" BSPP
MB2/1S3/28L/G3-M3		Motor	1	45 lpm	250 bar	25 bar	3/8" BSPP



Handle direction vs. port configuration



MB2 - no power beyond

Relief valve standard  
range 63-200 bar



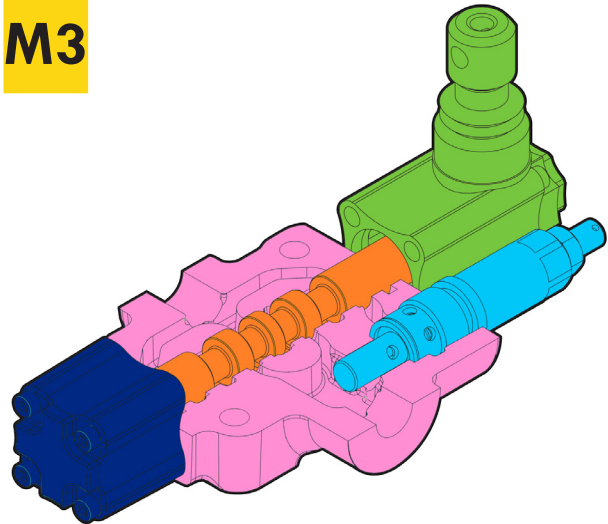
1800-OILSOL  
1800-645765

<https://oilsolutions.com.au/>

[sales@oilsolutions.com.au](mailto:sales@oilsolutions.com.au)

**MB-2 / 1S - 3 / 28L / G-3 - M3**

Code	Section
1S	No. of working sections
3	Inlet pressure relief valve
2	Spool option
8	B-side spool positioner
L	A-side option
G-3	3/8" BSP ports
M3	Outlet cover



BODY KITS	Code	Description	List Price
	1S	1 section	

INLET PRESSURE RELIEF VALVE	Code	Part #	Description	List Price
	2	YLMB32002	40-80 bar direct pressure relief valve	
	3	YLMB32003	63-200 bar direct pressure relief valve	STANDARD
	4	YLMB32004	160-315 bar direct pressure relief valve	
	SV	YLMB32100	Relief valve blanking plug	

SPOOL OPTIONS	Code	Part #	Description	List Price
	1	YLMB23001	Double acting, 3 positions, A+B closed in neutral position	STANDARD
	2	YLMB23002	Double acting, 3 positions, A+B open to tank in neutral position	STANDARD
	3	YLMB23003	Single acting on A closed in neutral position, 3 positions, B plugged	
	4	YLMB23004	Single acting on B closed in neutral position, 3 positions, A plugged	

B-SIDE SPOOL POSITIONER	Code	Part #	Description	List Price
	8	YLMB24008	With spring return to neutral position	STANDARD
	6-1	YLMB24061	Detent in position 1-0-2, without spring centered	
	6-2	YLMB24062	2 positions, detent in position 0-2, without spring centered	
	6-3	YLMB24063	2 positions, detent in position 1-0, without spring centered	
	6-4	YLMB24082	MB2 2 position kit, spring centred from position 2	
	6-5	YLMB24081	MB2 2 position kit, spring centred from position 1	
	9-1	YLMB24091	Detent in position 1, 2 with spring centered	
	9-2	YLMB24092	Detent in position 2 with spring centered	
	9-3	YLMB24093	Detent in position 1 with spring centered	
	8P	YLMB24080	ON/OFF pneumatic actuator	
	8MG1	YLMB24801	Microswitch kit operated in position 1 (normally open)	
	8MG2	YLMB24802	Microswitch kit operated in position 2 (normally open)	
	8MG3	YLMB24803	Microswitch kit operated in position 1 & 2 (normally open)	
	8D2	YLMB24200	Spring return to neutral position and pin with M8 male thread for dual control	

A-SIDE OPTION	Code	Part #	Description	List Price
	L	YLMB45000	Standard lever box	STANDARD
	TQ	YLMB45003	Flexible cable connection (also requires RCC-3 remote lever and cable - see p228)	

OUTLET COVER	Code	Description	List Price
	M3	Open centre	STANDARD

**MB3 (45 LPM)**

Part #	List Price \$	Spool	Qty	Max Flow	Max Pressure (bar)		Ports (BSPP)		Dimension (mm)	
					P	T	A-B	P-T-C	X	Y
MB3/1S3/18L/G4-3-4-M3		Cylinder	1	45	315	24	3/8"	1/2"	93.5	73
MB3/1S3/28L/G4-3-4-M3		Motor	1	45	315	24	3/8"	1/2"	93.5	73
MB3/1S3/48L/G4-3-4-M3		Single Acting	1	45	315	24	3/8"	1/2"	93.5	73
MB3/2S3/18L/G4-3-4-M3		Cylinder	2	45	315	24	3/8"	1/2"	130.5	110
MB3/3S3/18L/G4-3-4-M3		Cylinder	3	45	315	24	3/8"	1/2"	165.5	147
MB3/4S3/18L/G4-3-4-M3		Cylinder	4	45	315	24	3/8"	1/2"	202.5	184
MB3/5S3/18L/G4-3-4-M3		Cylinder	5	45	315	24	3/8"	1/2"	239.5	221
MB3/6S3/18L/G4-3-4-M3		Cylinder	6	45	315	24	3/8"	1/2"	275.6	258

Part #	List Price \$	Spool	Qty	Max Flow (lpm)	Max Pressure (bar)		Ports (BSPP)		Dimension (mm)	
					P	T	P-T-C	A-B	X	Y
MB3/1S3/5PYL/G4-3-4-M3		Cylinder w/ Float	1	45	315	25	1/2"	3/8"	93.5	73
MB3/2S3/5PYL/G4-3-4-M3		Cylinder w/ Float	2	45	315	25	1/2"	3/8"	130.5	110
MB3/2S3/18L/5PYL/G4-3-4-M3		1 x Cylinder, 1 x Float	2	45	315	25	1/2"	3/8"	130.5	110
MB3/4S3/18L/5PYL/G4-3-4-M3		2x Cylinder, 2x Float	4	45	315	25	1/2"	3/8"	202.5	184

Part #	List Price \$	Description
YLMB08160		MB3 manual lever M8 x 160mm
YLMB3SEAL		Spool seal kit (advise number of spools)
YLMB44080-SK		MB3 pneumatic actuator seal kit

Technical drawing of the 3-Port 1/2" NPT Female x 1/2" NPT Male x 1/2" NPT Female Tee, Model 3000. The drawing includes a front view (left) and a side view (right).

**Front View Dimensions:**

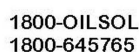
- Top ports: 20.8 [0.82], 27 [1.06], 35 [1.38], 30 [1.18], 17.7 [0.7]
- Left side ports: 40 [1.57], 47.5 [1.87], 16.5 [0.65], 16.5 [0.65], 22.5 [0.89]
- Right side ports: 9.7 [0.38], 81 [3.19], 12.3 [0.48]
- Bottom ports: 11.6 [0.46], 8.9 [0.35]
- Overall width: Y
- Overall height: X

**Side View Dimensions:**

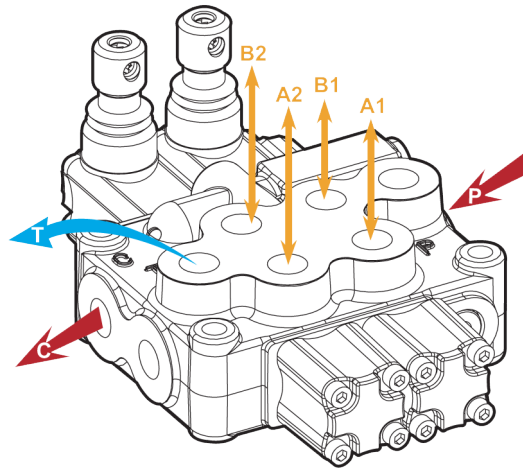
- Top port: 84.5 [3.33], 65.5 [2.58], 19 [0.75]
- Body: 59.5 [2.34], 103 [4.06], 37 [1.46]
- Bottom port: 34 [1.34], 19 [0.75]
- Overall width: 53 [2.09]
- Overall height: 199.5 [7.85]

**Port Labels:** B2, B1, P, T, A2, A1

**Port Diameter:** 3-ø8.5

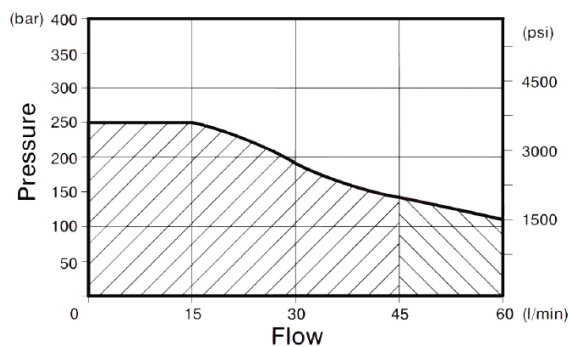


**sales@oilsolutions.com.au**



### MB3 Electrical Options

Part #	List Price \$	Voltage	Function	Spool	Manual Lever	Nominal Pres.	Nominal Flow
YLMB34511		12v DC	D/A	Closed centre	-	250 bar	45 lpm
YLMB34521		12v DC	D/A	Open centre	-	250 bar	45 lpm
YLMB34512		24v DC	D/A	Closed centre	-	250 bar	45 lpm
YLMB34522		24v DC	D/A	Open centre	-	250 bar	45 lpm
YLMB34511L		12v DC	D/A	Closed centre	Yes	250 bar	45 lpm
YLMB34521L		12v DC	D/A	Open centre	Yes	250 bar	45 lpm
YLMB34512L		24v DC	D/A	Closed centre	Yes	250 bar	45 lpm
YLMB34522L		24v DC	D/A	Open centre	Yes	250 bar	45 lpm
YLMB8ES001		MB3 8ES Coil Retaining Nut					
YLMB8ES12D		MB3 8ES Coil 12v DC					
YLMB8ES24D		MB3 8ES Coil 24v DC					



**Be sure to consult the above graph when selecting electrical operated valves**



36w coils

# MONOBLOCK VALVES

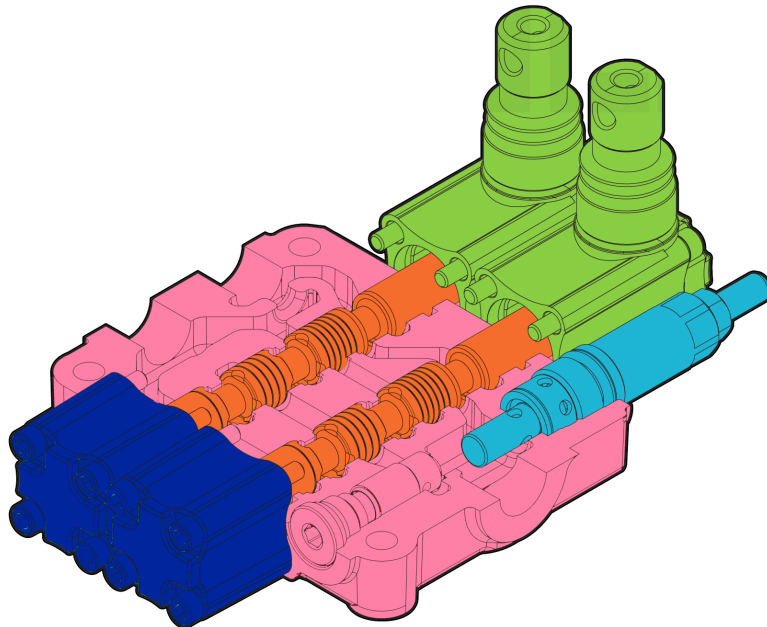
## MB3 - ORDERING A COMPLETE ASSEMBLED VALVE

MB-3 / 2S - 3 / 18L / 28L / G-4-3-4 - M3 -

Code	Section
2S	No. of working sections
3	Inlet pressure relief valve
1	Spool option
8	B-side spool positioner
L	A-side option
G-3	3/8" BSP ports
G-4	1/2" BSP ports
M3	Outlet cover
12	Voltage (if applicable)

\* Spool sequence starts from the spool closest to the relief valve.

\* Spool option B-side and A-side must be repeated for each spool section unless the configuration is common throughout the valve.



BODY KITS	Code	Description	List Price
	1S	1 section	
	2S	2 section	
	3S	3 section	
	4S	4 section	
	5S	5 section	
	6S	6 section	

INLET PRESSURE RELIEF VALVE	Code	Part #	Description	List Price
	2	YLMB32002	40-80 bar direct pressure relief valve	
	3	YLMB32003	60-210 bar direct pressure relief valve	STANDARD
	4	YLMB32004	160-315 bar direct pressure relief valve	
	5V	YLMB32100	Relief valve blanking plug	

SPOOL OPTIONS	Code	Part #	Description	List Price
	1	YLMB33001	Double acting, 3 positions, A+B closed in neutral position	STANDARD
	2	YLMB33002	Double acting, 3 positions, A+B open to tank in neutral position	
	3	YLMB33003	Single acting on A closed in neutral position, 3 positions, B plugged	
	4	YLMB33004	Single acting on B closed in neutral position, 3 positions, A plugged	
	5PY	Selected valves only	Double acting, 4 positions, floating circuit 4th position w/ A+B open to tank via lever	-



1800-OILSOL  
1800-645765

<https://oilsolutions.com.au/>

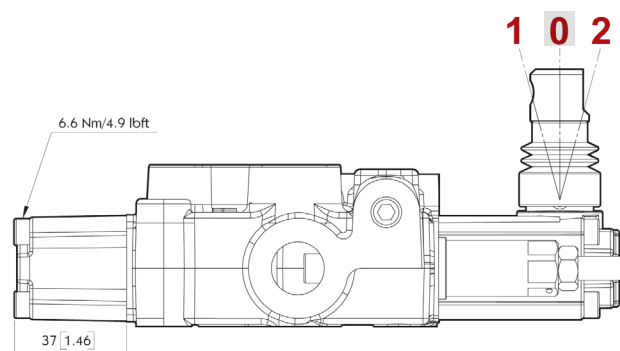
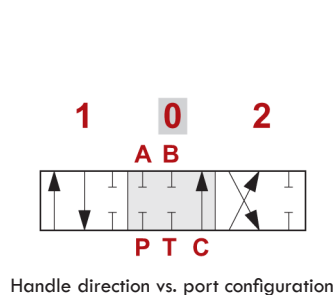
[sales@oilsolutions.com.au](mailto:sales@oilsolutions.com.au)

<b>B-SIDE SPOOL POSITIONER</b>	Code	Part #	Description	List Price
	6-1	YLMB44061	Detent in position 1-0-2, without spring centered	
	6-2	YLMB44062	2 positions, detent in position 0-2, without spring centered	
	6-3	YLMB44063	2 positions, detent in position 1-0, without spring centered	
	8	YLMB44008	With spring return to neutral position	<b>STANDARD</b>
	8-1	YLMB44081	2 positions, with spring centered from position 1	
	8-2	YLMB44082	2 positions, with spring centered from position 2	
	9-1	YLMB44091	Detent in position 1, 2 with spring centered	
	9-2	YLMB44092	Detent in position 2 with spring centered	
	9-3	YLMB44093	Detent in position 1 with spring centered	
	8D2	YLMB44200	Spring return to neutral position and pin with M8 male thread for dual control	
	8MG1	YLMB44801	Microswitch kit operated in position 1 (normally open)	
	8MG2	YLMB44802	Microswitch kit operated in position 2 (normally open)	
	8MG3	YLMB44803	Microswitch kit operated in position 1 & 2 (normally open)	
	9MG4	YLMB44805	5PYL float microswitch kit operated in position 1 & 2 (normally open)	
	8P	YLMB44080	ON/OFF pneumatic actuator	
	8EP3	YLMB44300-12V YLMB44300-24V	ON/OFF electro-pneumatic actuator 12v DC / 24v DC	
	8ES3	YLMB345**	** See electrical options on page 219 ON/OFF electro-hydraulic control without lever	
	8ES3LES	YLMB345**L	ON/OFF electro-hydraulic control with lever	
	8ESNA	YLMB8ESN1 2D	ON/OFF electro-hydraulic control with lever	
	8ESNB	YLMB8ESN24D	ON/OFF electro-hydraulic control with lever	
	8IM	YLMB440810	Hydraulic pilot kit - MB3/MB4 - pilot pressure maximum 50 bar	

<b>A-SIDE OPTION</b>	Code	Part #	Description	List Price
	L	YLMB45000	Standard lever box	<b>STANDARD</b>
	LCB	YLMB45002	Joystick lever for 2 section operation	
	TQ	YLMB45003	Flexible cable connection (also requires RCC-3 remote lever and cable - see p228)	

<b>OUTLET COVER</b>	Code	Part #	Description	List Price
	M3	-	Open centre	<b>STANDARD</b>
	M8	YLMB34COP	Closed centre (power beyond conversion plug)	

<b>VOLTAGE</b>	Code	Description	List Price
	12	12v DC coils	-
	24	24v DC coils	-



1800-OILSOL  
1800-645765

<https://oilsolutions.com.au/>

[sales@oilsolutions.com.au](mailto:sales@oilsolutions.com.au)

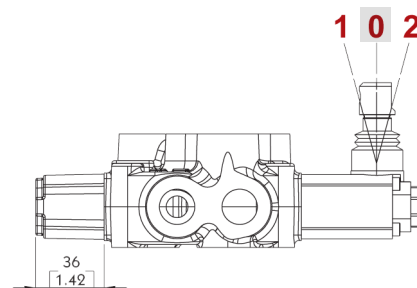
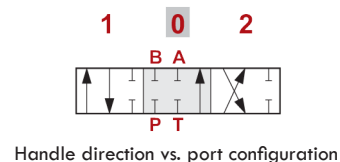
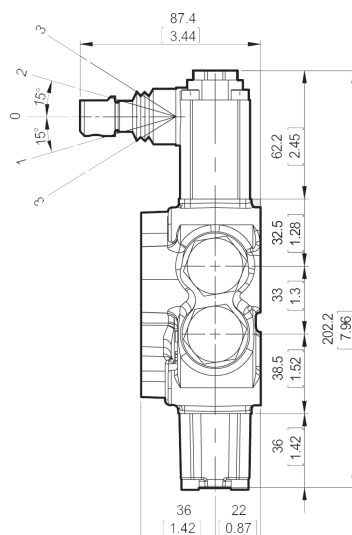
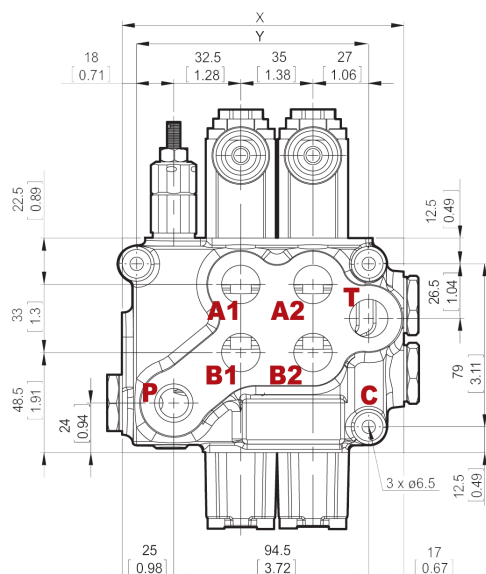
**MB4 (60 LPM)**

## MB4 Monoblock

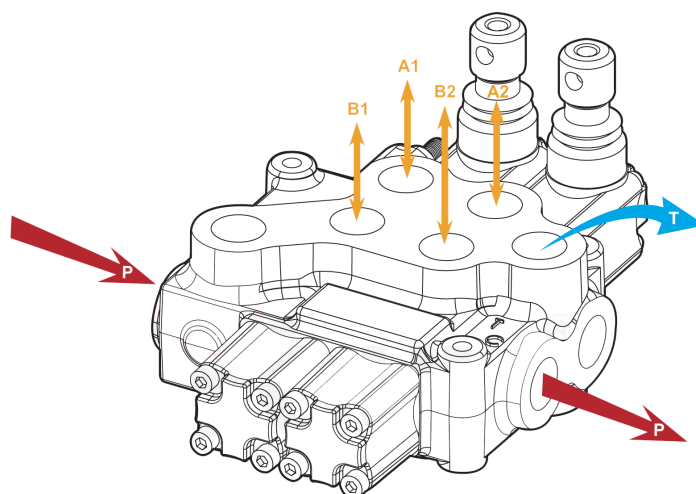
Part #	List Price \$	Spool	Qty	Max Flow (lpm)	Max Pressure (bar)		Ports (BSPP)	Dimension (mm)	
					P	T		X	Y
MB4/1S3/18L/G4-M3		Cylinder	1	60	315	25	1/2"	101.5	77.5
MB4/1S3/28L/G4-M3		Motor	1	60	315	25	1/2"	101.5	77.5
MB4/1S3/48L/G4-M3		Single Acting	1	60	315	25	1/2"	101.5	77.5
MB4/2S3/18L/G4-M3		Cylinder	2	60	315	25	1/2"	136.5	112.5
MB4/3S3/18L/G4-M3		Cylinder	3	60	315	25	1/2"	171.5	147.5
MB4/4S3/18L/G4-M3		Cylinder	4	60	315	25	1/2"	206.5	182.5
MB4/5S3/18L/G4-M3		Cylinder	5	60	315	25	1/2"	241.5	217.5
MB4/6S3/18L/G4-M3		Cylinder	6	60	315	25	1/2"	276.5	252.5

## MB4 Accessories

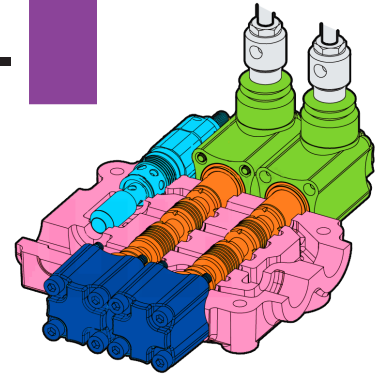
Part #	List Price \$	Description
YLMB08160		MB4 manual lever M10 x 200mm
YLMB4SEAL		Spool seal kit (advise number of spools)
YLMB44080-SK		MB4 pneumatic actuator seal kit



**Relief valve standard  
range 63-200 bar**



**MB-4 / 2S - 3 / 18L / 28L / G-4 - M3 -**



### NOMENCLATURE GUIDE

<b>2S</b>	No. of working sections	<b>8</b>	B-side spool positioner	<b>M3</b>	Outlet cover
<b>3</b>	Inlet pressure relief valve	<b>L</b>	A-side option	<b>12</b>	Voltage (if applicable)
<b>1</b>	Spool option	<b>G-4</b>	1/2" BSP ports		

\* Spool sequence starts from the spool closest to the relief valve.

\* Spool option B-side and A-side must be repeated for each spool section unless the configuration is common throughout the valve.

BODY KITS	Code	Description	List Price
	1S	1 section	
	2S	2 sections	
	3S	3 sections	
	4S	4 sections	
	5S	5 sections	
	6S	6 sections	

INLET PRESSURE RELIEF VALVE	Code	Part #	Description	List Price \$
	2	YLMB42002	40-80 bar direct pressure relief valve	
	3	YLMB42003	63-200 bar direct pressure relief valve	STANDARD
	4	YLMB42004	160-315 bar direct pressure relief valve	
	SV	YLMB42100	Relief valve blanking plug	

SPOOL OPTIONS	Code	Part #	Description	List Price
	1	YLMB43001	Double acting, 3 positions, A+B closed in neutral position	STANDARD
	2	YLMB43002	Double acting, 3 positions, A+B open to tank in neutral position	
	3	YLMB43003	Single acting on A closed in neutral position, 3 positions, B plugged	
	4	YLMB43004	Single acting on B closed in neutral position, 3 positions, A plugged	

B-SIDE SPOOL POSITIONER	Code	Part #	Description	List Price \$
	6-1	YLMB44061	Detent in position 1-0-2, without spring centered	
	6-2	YLMB44062	2 positions, detent in position 0-2, without spring centered	
	6-3	YLMB44063	2 positions, detent in position 1-0, without spring centered	
	8	YLMB44008	With spring return to neutral position	STANDARD
	8-1	YLMB44081	2 positions, with spring centered from position 1	
	8-2	YLMB44082	2 positions, with spring centered from position 2	
	9-1	YLMB44091	Detent in position 1, 2 with spring centered	
	9-2	YLMB44092	Detent in position 2 with spring centered	
	9-3	YLMB44093	Detent in position 1 with spring centered	
	8EP3	YLMB44300-12V YLMB44300-24V	ON/OFF electro-pneumatic actuator 12v DC / 24v DC	
	8P	YLMB44080	ON/OFF pneumatic actuator	
	8MG1	YLMB44801	Microswitch kit operated in position 1 (normally open)	
	8MG2	YLMB44802	Microswitch kit operated in position 2 (normally open)	
	8MG3	YLMB44803	Microswitch kit operated in position 1 & 2 (normally open)	
	8IM	YLMB440810	Hydraulic pilot kit - MB4- pilot pressure max 50 bar	

A-SIDE OPTION	Code	Part #	Description	List Price \$
	L	YLMB45000	Standard lever box	STANDARD
	LCB	YLMB45002	Joystick lever for 2 section operation	
	TQ	YLMB45003	Flexible cable connection (also requires RCC-3 remote lever and cable - see p228)	

OUTLET COVER	Code	Part #	Description	List Price \$
	M3	-	Open centre	STANDARD
	M8	YLMB34COP	Closed centre (power beyond conversion plug)	

VOLTAGE	Code	Description	List Price \$
	12	12v DC coils	-
	24	24v DC coils	-

# MONOBLOCK VALVES

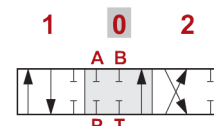
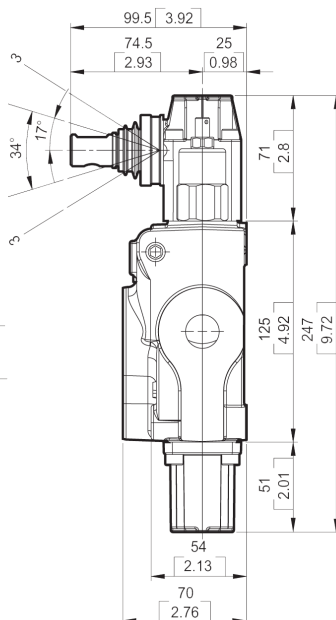
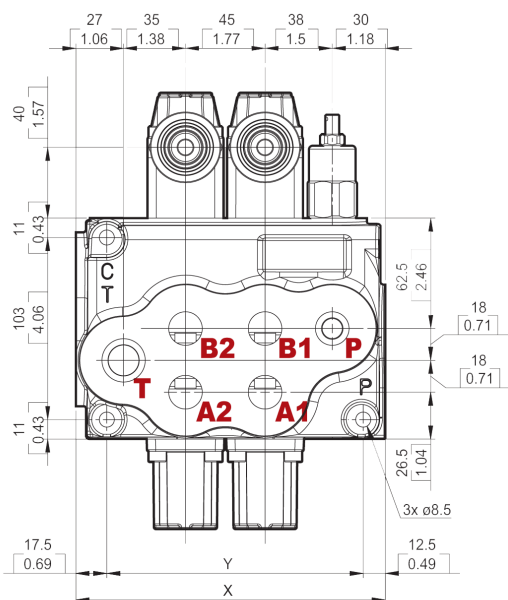
## MB5 (80 LPM)

### MB5 Monoblock

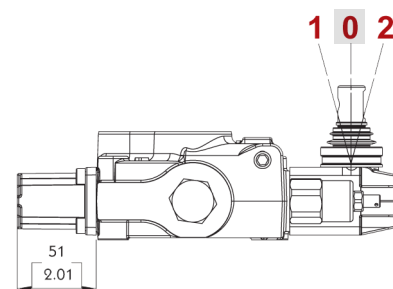
Part #	List Price \$	Spool	Qty	Max Flow (lpm)	Max Pressure (bar)		Ports (BSPP)		Dimension (mm)	
					P	T	P-T-C	A-B	X	Y
MB5/1S3/18L/G8-6-8-M3		Cylinder	1	80	315	25	1"	3/4"	130	100
MB5/1S3/28L/G8-6-8-M3		Motor	1	80	315	25	1"	3/4"	130	100
MB5/1S3/48L/G8-6-8-M3		Single Acting	1	80	315	25	1"	3/4"	130	100
MB5/2S3/18L/G8-6-8-M3		Cylinder	2	80	315	25	1"	3/4"	174.5	145
MB5/3S3/18L/G8-6-8-M3		Cylinder	3	80	315	25	1"	3/4"	219.5	190
MB5/4S3/18L/G8-6-8-M3		Cylinder	4	80	315	25	1"	3/4"	264.5	235
MB5/5S3/18L/G8-6-8-M3		Cylinder	5	80	315	25	1"	3/4"	309.5	280
MB5/6S3/18L/G8-6-8-M3		Cylinder	6	80	315	25	1"	3/4"	354.5	325

### MB5 Accessories

Part #	List Price \$	Description
YLMB10200		MB5 manual lever M10 x 200mm
YLMB5SEAL		Spool seal kit (advise number of spools)
YLMB54080-SK		MB5 pneumatic actuator seal kit

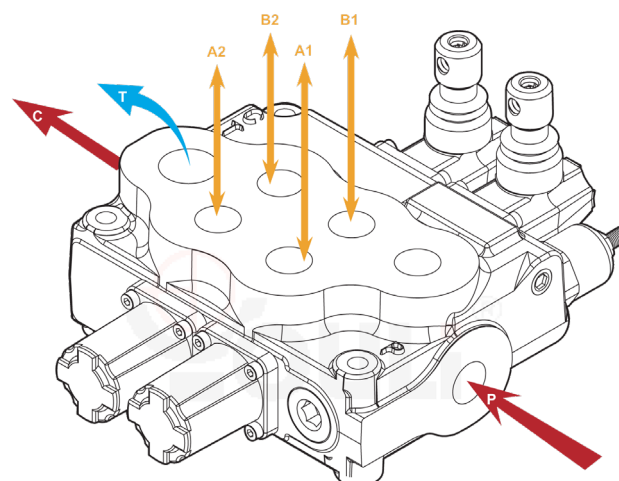


Handle direction vs. port configuration

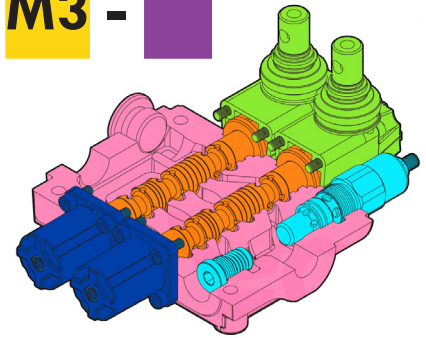


Relief valve standard  
range 125-250 bar

Power beyond plug  
not included



**MB-5 / 2S - 3 / 18L / 28L / G-8-6-8 - M3 -**



### NOMENCLATURE GUIDE

<b>2S</b>	No. of working sections	<b>8</b>	B-side spool positioner	<b>G-6</b>	3/4" BSP ports
<b>3</b>	Inlet pressure relief valve	<b>L</b>	A-side option	<b>M3</b>	Outlet cover
<b>1</b>	Spool option	<b>G-8</b>	1" BSP ports	<b>12</b>	Voltage (if applicable)

\* Spool sequence starts from the spool closest to the relief valve.

\* Spool option B-side and A-side must be repeated for each spool section unless the configuration is common throughout the valve.

BODY KITS	Code	Description	List Price
	1S	1 section	
	2S	2 sections	
	3S	3 sections	
	4S	4 sections	
	5S	5 sections	
	6S	6 sections	

INLET PRESSURE RELIEF VALVE	Code	Part #	Description	List Price
	XAG	YLX21000	25-315 bar pilot operated pressure relief valve	
	2	YLMB52002	80-160 bar direct pressure relief valve	
	3	YLMB52003	125-250 bar direct pressure relief valve	STANDARD
	4	YLMB52004	200-315 bar direct pressure relief valve	
	SV	YLMB52100	Relief valve blanking plug	

SPOOL OPTIONS	Code	Part #	Description	List Price
	1	YLMB53001	Double acting, 3 positions, A+B closed in neutral position	STANDARD
	2	YLMB53002	Double acting, 3 positions, A+B open to tank in neutral position	
	3	YLMB53003	Single acting on A closed in neutral position, 3 positions, B plugged	
	4	YLMB53004	Single acting on B closed in neutral position, 3 positions, A plugged	

B-SIDE SPOOL POSITIONER	Code	Part #	Description	List Price
	6-1	YLMB54061	Detent in position 1-0-2, without spring centered	
	6-2	YLMB54062	2 positions, detent in position 0-2, without spring centered	
	8	YLMB54008	With spring return to neutral position	STANDARD
	8-1	YLMB54810	2 positions, with spring centered from position 1	
	8-2	YLMB54820	2 positions, with spring centered from position 2	
	9-1	YLMB54091	Detent in position 1, 2 with spring centered	
	9-2	YLMB54092	Detent in position 2 with spring centered	
	9-3	YLMB54093	Detent in position 1 with spring centered	
	8EP3	YLMB54300-12V YLMB54300-24V	ON/OFF electro-pneumatic actuator 12v DC / 24v DC	
	8P	YLMB54080	ON/OFF pneumatic actuator	
	8MG1	YLMB54801	Microswitch kit operated in position 1 (normally open)	
	8MG2	YLMB54802	Microswitch kit operated in position 2 (normally open)	
	8MG3	YLMB54803	Microswitch kit operated in position 1 & 2 (normally open)	
	8IM	YLMB540810	Hydraulic pilot kit - MB5- 8IM type	

A-SIDE OPTION	Code	Part #	Description	List Price
	L	YLMB55000	Standard lever box	STANDARD
	LCB	YLMB55002	Joystick lever for 2 section operation	
	TQ	YLMB55003	Flexible cable connection (also requires RCC-3 remote lever and cable - see p228)	

OUTLET COVER	Code	Part #	Description	List Price
	M3	-	Open centre	STANDARD
	M8	YLMB5COPG6	Closed centre (power beyond conversion plug) 3/4" BSPP	
		YLMB5COPG8	Closed centre (power beyond conversion plug) 1" BSPP	

VOLTAGE	Code	Description	List Price
	12	12v DC coils	-
	24	24v DC coils	-

# MONOBLOCK VALVES

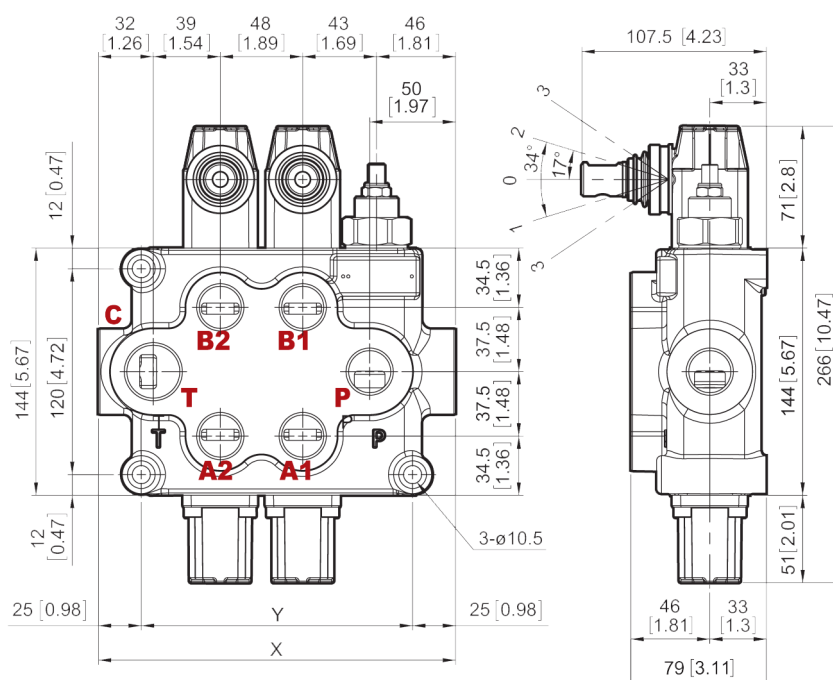
## MB6 (120 LPM)

### MB6 Monoblock

Part #	List Price \$	Spool	Qty	Max Flow (lpm)	Max Pressure (bar)		Ports (BSPP)		Dimension (mm)	
					P	T	P-T-C	A-B	X	Y
MB6/1S3/18L/G8-6-8-M3		Cylinder	1	120	315	25	1"	3/4"	160	110
MB6/1S3/28L/G8-6-8-M3		Motor	1	120	315	25	1"	3/4"	160	110
MB6/1S3/48L/G8-6-8-M3		Single Acting	1	120	315	25	1"	3/4"	160	110
MB6/2S3/18L/G8-6-8-M3		Cylinder	2	120	315	25	1"	3/4"	208	158
MB6/3S3/18L/G8-6-8-M3		Cylinder	3	120	315	25	1"	3/4"	256	206
MB6/4S3/18L/G8-6-8-M3		Cylinder	4	120	315	25	1"	3/4"	304	254

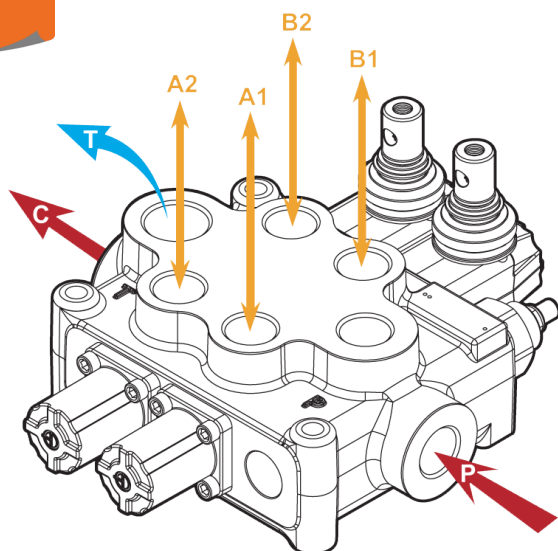
### MB6 Accessories

Part #	List Price \$	Description
YLMB64080-SK		MB6 pneumatic actuator seal kit

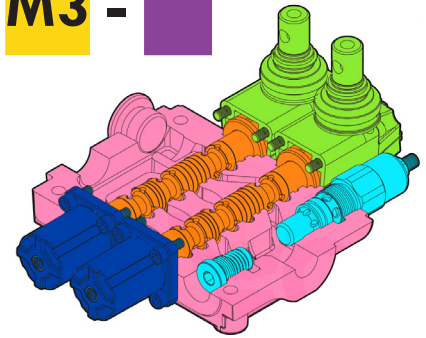


Relief valve standard  
range 125-250 bar

Power beyond plug  
not included



**MB-6 / 2S - 3 / 18L / 28L / G-8-6-8 - M3 -**



### NOMENCLATURE GUIDE

<b>2S</b>	No. of working sections	<b>8</b>	B-side spool positioner	<b>G-6</b>	3/4" BSP ports
<b>3</b>	Inlet pressure relief valve	<b>L</b>	A-side option	<b>M3</b>	Outlet cover
<b>1</b>	Spool option	<b>G-8</b>	1" BSP ports	<b>12</b>	Voltage (if applicable)

\* Spool sequence starts from the spool closest to the relief valve.

\* Spool option B-side and A-side must be repeated for each spool section unless the configuration is common throughout the valve

BODY KITS	Code	Description	List Price
	1S	1 section	
	2S	2 sections	
	3S	3 sections	
	4S	4 sections	

INLET PRESSURE RELIEF VALVE	Code	Part #	Description	List Price
	XFG	YLP6N63000	25-315 bar pilot operated pressure relief valve	
	SV	YLP6N64000	Relief valve blanking plug	
	3	YLM662003	125-250 bar direct pressure relief valve	STANDARD

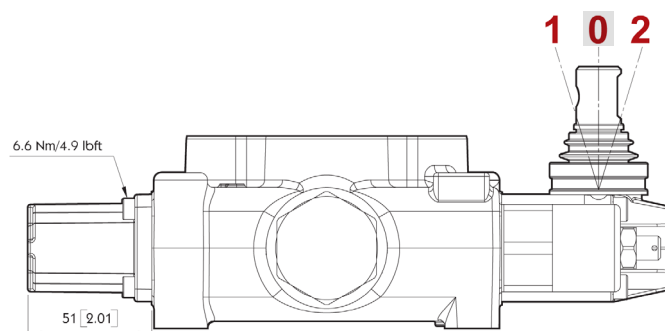
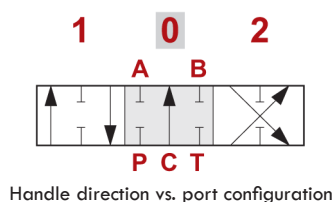
SPOOL OPTIONS	Code	Part #	Description	List Price
	1	YLM663001	Double acting, 3 positions, A+B closed in neutral position	STANDARD
	2	YLM663002	Double acting, 3 positions, A+B open to tank in neutral position	
	3	YLM663003	Single acting on A closed in neutral position, 3 positions, B plugged	
	4	YLM663004	Single acting on B closed in neutral position, 3 positions, A plugged	

B-SIDE SPOOL POSITIONER	Code	Part #	Description	List Price
	6-1	YLM664061	Detent in position 1-0-2, without spring centered	
	8	YLM664008	With spring return to neutral position	STANDARD
	9-2	YLM664092	Detent in position 2 with spring centered	
	9-3	YLM664093	Detent in position 1 with spring centered	
	8P	YLM664080	ON/OFF pneumatic actuator	
	8EP3	YLM664300-12V YLM664300-24V	ON/OFF electro-pneumatic actuator 12v DC / 24v DC	

A-SIDE	Code	Part #	Description	List Price
	L	YLM665000	Standard lever box	STANDARD

OUTLET COVER	Code	Part #	Description	List Price
	M3	-	Open centre	STANDARD
	M8	2BMTX01954	Closed centre (power beyond conversion plug) 3/4" BSPP	

VOLTAGE	Code	Description	List Price
	12	12v DC coils	-
	24	24v DC coils	-



### Cable Control

Part #	List Price \$	Description
RCC-3/1S/HL		Remote lever for cable control MB2,3,4
RCC-5/1S/HL		Remote lever for cable control MB5
FCR-2		Joystick for cable control, dual axis
YLMB45003		Cable Connector, spool to joystick cable, MB2,3,4
YLMB55003		Cable Connector, spool to joystick cable, MB5
YLMBCABLE1M		Cable 1 Metre
YLMBCABLE1.5M		Cable 1.5 Metre
YLMBCABLE2M		Cable 2 Metre
YLMBCABLE2.5M		Cable 2.5 Metre
YLMBCABLE3M		Cable 3 Metre

### Hydraulic Pilot Controllers

Part #	List Price \$	Description	Axis	Flow	Inlet Pressure Range	A+B Outlet Pressure Range
JHP-1/1S-G2/8-A01B		Spring centre	Single	5-20 lpm	30-100 bar	5-19 bar
JHP-1/1S-G2/9-1-A01B		Spring centre friction detent in position 1+2	Single	5-20 lpm	30-100 bar	5-19 bar
JHP-1/1S-G2/FD-A01B		Friction detent	Single	5-20 lpm	30-100 bar	5-19 bar
JHP-1/1S-G2/LES-A01B		Safety lever detent in neutral	Single	5-20 lpm	30-100 bar	5-19 bar
JHP-2/01-G2/01-LCB-B02B		Spring centre	Dual	5-20 lpm	30-100 bar	6-25 bar

*Note: all hydraulic pilot controllers are suitable for use with sectional, proportional and monoblock valves*

### Direct Mount Joystick

Part #	List Price \$	Description
YLMB45002		Dual axis direct mount joystick, MB3/MB4
YLMB55002		Dual axis direct mount joystick, MB5



FCR



RCC



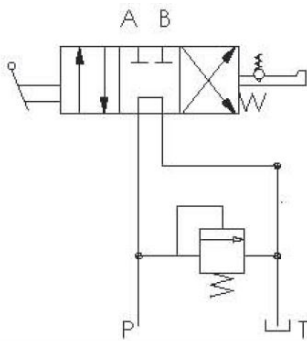
JHP



YLMB

### Log Splitter Valve

Part #	List Price \$	Max Flow	Max Pressure	P+T Ports	A+B Ports
LSV81303400		80 lpm	3265 psi	3/4" BSPP	1/2" BSPP
LSV81035340		120 lpm	3265 psi	3/4" BSPP	1/2" BSPP
LSV-81303400-HK		Spare lever assembly 1/2" 80 lpm			
LSV-81035340-HK		Spare lever assembly 1/2" 120 lpm			
LSV-81303400-SK		Seal kit for valve LSV81303400			
LSV-81035340-SK		Seal kit for valve LSV81035340			



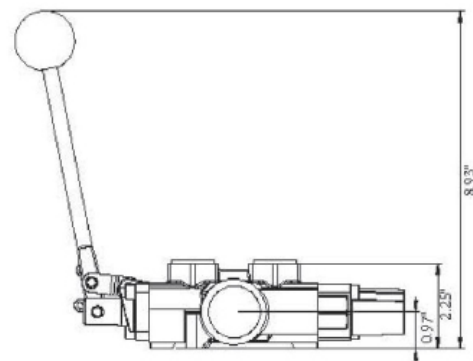
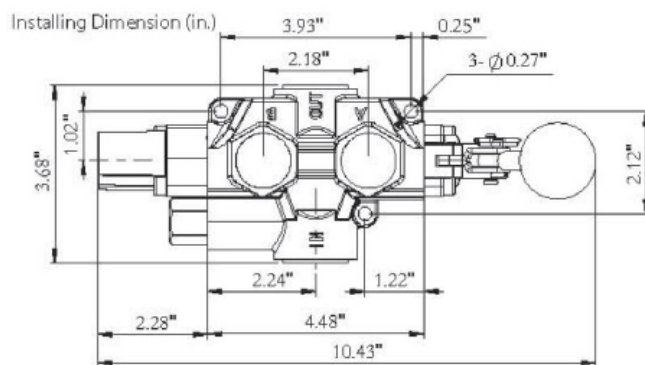
Relief valve preset  
2250psi

Recommended  
filtration 10micron

Max tank pressure  
500psi

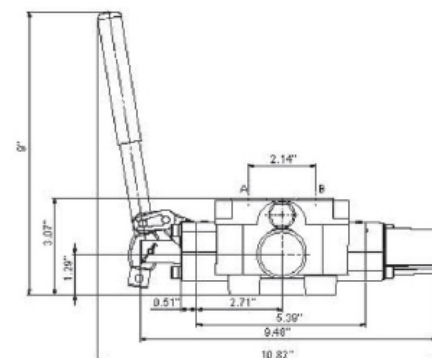
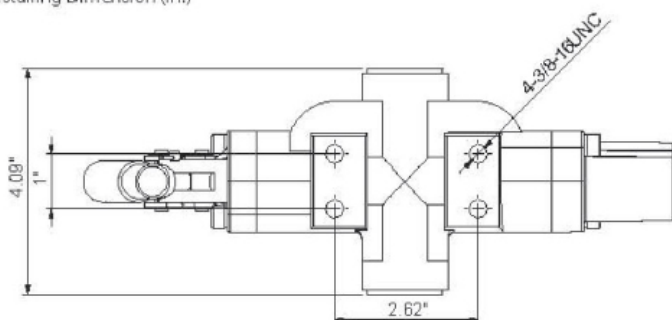
Kickout pressure  
800psi (non-adj.)

### LSV81303400



### LSV81035340

Installing Dimension (in.)



# Hydraulics Network



1800-OILSOL  
1800-645765

<https://oilsolutions.com.au/>

[sales@oilsolutions.com.au](mailto:sales@oilsolutions.com.au)

## MELBOURNE VICTORIA

- 📍 23 Quinlan Road, Epping, VIC 3076
- ✉️ [sales@hydraulicsnetwork.com.au](mailto:sales@hydraulicsnetwork.com.au)
- ☎️ 03 9399 8957

## BRISBANE QUEENSLAND

- 📍 29 Annie Street, Coopers Plains, QLD 4108
- ✉️ [salesqld@hydraulicsnetwork.com.au](mailto:salesqld@hydraulicsnetwork.com.au)
- ☎️ 07 3277 5969

[www.hydraulicsnetwork.com.au](http://www.hydraulicsnetwork.com.au)

AUSTRALIAN-OWNED  
INDEPENDENT HYDRAULICS WHOLESALER