

SENSORS



Section / Description	page
INCLINOMETERS	SN3
LENGTH AND ANGLE SENSORS	SN8
SLIP-IN SPOOL POSITION TRANSDUCER	SN9
PROXIMITY SENSOR	SN11
MATERIAL SENSOR	SN12
ACCESSORIES	SN13



1800-OILSOL
1800-645765

<https://oilsolutions.com.au/>

sales@oilsolutions.com.au

MODEL	DESCRIPTION	PAGE
EC-SNR-ANG-G360-H	Single axis inclinometer with gyroscope	SN3
EC-SNR-ANG-S9090-H	Single axis inclinometer	SN4
EC-SNR-ANG-D3030-H	Dual axis inclinometer (tilt device)	SN5
EC-SNR-ANG-S9090 J1939	Single axis inclinometer CANbus interface	SN6
EC-SNR-ANG-D3030 J1939	Dual axis inclinometer (tilt device) CANbus interface	SN7
EC-SNR-LA-4.5180-H	Redundant length and angle sensor CANbus interface	SN8
EC-SNR-POS-75S-H	Slip-in spool position transducer	SN9
EC-SNR-POS-75O-H	Slip-in spool position transducer	SN10
EC-SNR-PRX-0102-H	Proximity sensor	SN11
EC-SNR-EOM-H	Material sensor	SN12
Accessories	Accessories	SN13

WARNING: the specifications/application data shown in our catalogs and data sheets are intended only as a general guide for the product described (herein). Any specific application should not be undertaken without independent study, evaluation, and testing for suitability.

EC-SNR-ANG-G360-H SINGLE AXIS INCLINOMETER WITH GYROSCOPE**DESCRIPTION**

Absolute single axis (roll) inclinometer with combined gyroscope and accelerometer.

OPERATION

Signal output is linearly proportional to the angle and highly insensitive to high shock, acceleration and random vibrations. The gyroscope allows a fast measure of the angle without the need of the heavy filtering which is typical of plain accelerometer-based devices.

With a measurement range of $\pm 180^\circ$ (360°) this device is designed to be connected in a CANbus network (J1939 or CANOpen). It is well-suited for self-levelling applications of systems needing a precise dynamic response and high accuracy.

FEATURES

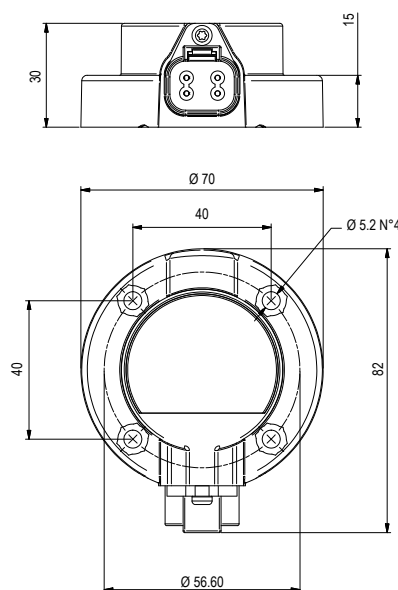
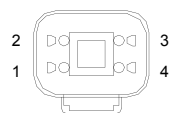
- Supply line is protected against reversed polarity and load dump.
- CAN Bus line is protected against short circuits to GND and battery voltage.
- Microprocessor based, with dedicated Kalman filters.
- Vibration and shock resistant.
- Combination of gyroscope and accelerometer.
- Safety requirements:
 - the single device designed for systems having PLr = c
 - easy assembling of dual device for systems having PLr = d
- Electro Magnetic Compatibility (EMC): EN 61000-6-2 (Immunity)
EN 61000-6-3 (Emissions)

SPECIFICATIONS

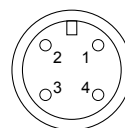
Operating voltage:	8 ÷ 32 VDC
Max current consumption:	70 mA @ 12V
CANbus physical layer:	ISO 11898, 250 kbit/s (adjustable bus speed)
CANbus protocol:	J1939 (option: CANOpen)
Max working angle	$\pm 180^\circ$
Resolution:	0.01°
Stability:	0.2° @ 25°C
Dynamic:	125°/s
Operating temperature:	-40°C / +105°C
Degree of protection:	IP 68
Connector type:	Deutsch DT04-4P or M12
Fixing screws included:	n.4 - M5x20
Weight:	120 g (screws included)

APPLICATIONS

- 12 VDC and 24 VDC systems.
- Automatic basket self levelling for aerial platforms, agricultural machines and lift equipment.
- Automatic bucket self levelling for wheel loaders.

**DIMENSIONS****CONNECTIONS**

Deutsch DT04-4P



M12

- 1 +VBATT
- 2 GND
- 3 CAN-H
- 4 CAN-L

Ordering Code

20.0401.043 (DEUTSCH CONNECTOR)

20.0401.044 (M12 CONNECTOR)

WARNING: the specifications/application data shown in our catalogs and data sheets are intended only as a general guide for the product described (herein). Any specific application should not be undertaken without independent study, evaluation, and testing for suitability.

EC-SNR-ANG-S9090-H SINGLE AXIS INCLINOMETER**DESCRIPTION**

Absolute single axis inclinometer sensor based on earth's gravity.

OPERATION

Signal output is linearly proportional to the tilt angle to the ground. With a measurement range of $\pm 90^\circ$ this device provides a 0.5 to 4.5 VDC output signal over its range with a nominal 2.5 VDC at 0 degree. It is normally used to control the inclination of a mechanical structure respect to the earth line.

FEATURES

- Supply line is protected against reversed polarity and load dump.
- Outputs are protected against short circuits to GND and supply.
- Vibration and shock resistant.
- Anti-debouncing software filter.
- CE certification.
- Electro Magnetic Compatibility (EMC): EN 61000-6-2 (Immunity)
EN 61000-6-3 (Emissions)

SPECIFICATIONS

Operating voltage:	8.5÷30 VDC
Max current consumption:	20 mA
Output signal:	0.5÷2.5÷4.5 VDC
Max current output:	10 mA
Max working angle:	$\pm 90^\circ$
Resolution:	0.25°
Operating temperature:	-40°C / +105°C
Degree of protection:	IP 68
Connector type:	Deutsch DT04-4P or M12
Fixing screws included:	n.4 - M5x20
Weight:	120 g (screws included)

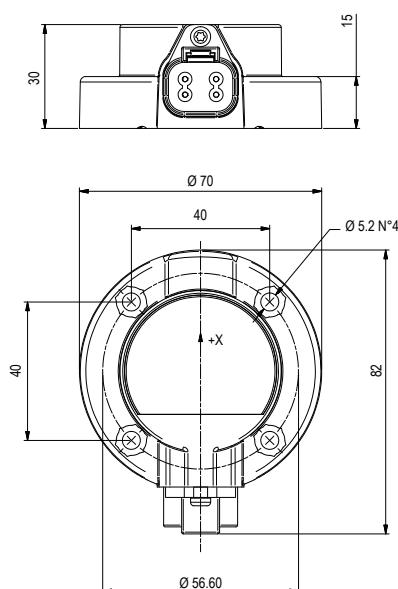
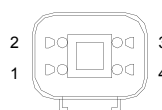
APPLICATIONS

- 12 VDC and 24 VDC systems.
- Inclination sensor for articulated cranes and aerial platforms.

Ordering Code

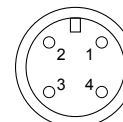
20.0401.016 with Deutsch connector

20.0401.018 with M12 connector

**DIMENSIONS****CONNECTIONS**

Deutsch DT04-4P

- 1 +VBATT
2 GND
3 OUTPUT X AXIS



M12

- 1 +VBATT
2 GND
3 OUTPUT X AXIS

WARNING: the specifications/application data shown in our catalogs and data sheets are intended only as a general guide for the product described (herein). Any specific application should not be undertaken without independent study, evaluation, and testing for suitability.

EC-SNR-ANG-D3030-H DUAL AXIS INCLINOMETER (TILT DEVICE)**DESCRIPTION**

Absolute dual axis inclinometer sensor based on earth's gravity.

OPERATION

Signal outputs are linearly proportional to the tilt angle to the ground. With a measurement range of $\pm 30^\circ$ this device provides a 0.5 to 4.5 VDC output signal over its range with a nominal 2.5 VDC at 0 degree. It is normally used to control the planarity of chassis or mechanical structure respect to the earth line.

FEATURES

- Supply line is protected against reversed polarity and load dump.
- Outputs are protected against short circuits to GND and supply.
- Microprocessor based.
- Vibration and shock resistant.
- Anti-debouncing software filter.
- CE certification.
- Electro Magnetic Compatibility (EMC): EN 61000-6-2 (Immunity)
EN 61000-6-3 (Emissions)

SPECIFICATIONS

Operating voltage:	8.5 \pm 30 VDC
Max current consumption:	20 mA
Output signal:	0.5 \div 2.5 \div 4.5 VDC
Max current output:	10 mA
Max working angle for each axis:	$\pm 30^\circ$
Resolution:	0.10°
Operating temperature:	-40°C / +105°C
Degree of protection:	IP 68
Connector type:	Deutsch DT04-4P or M12
Fixing screws included:	n.4 - M5x20
Weight:	120 g (screws included)

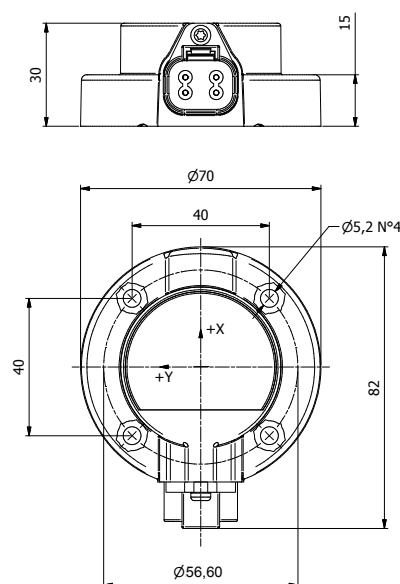
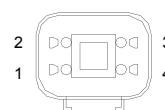
APPLICATIONS

- 12 VDC and 24 VDC systems.
- Automatic self levelling system for trucks, agricultural machines and lift equipment.
- Vehicle tilt monitoring.

Ordering Code

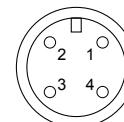
20.0401.012/A with Deutsch connector

20.0401.019/A with M12 connector

**DIMENSIONS****CONNECTIONS**

Deutsch DT04-4P

- 1 +VBATT
- 2 GND
- 3 OUTPUT Y AXIS
- 4 OUTPUT Y AXIS



M12

- 1 +VBATT
- 2 GND
- 3 OUTPUT X AXIS
- 4 OUTPUT Y AXIS

WARNING: the specifications/application data shown in our catalogs and data sheets are intended only as a general guide for the product described (herein). Any specific application should not be undertaken without independent study, evaluation, and testing for suitability.

EC-SNR-ANG-S9090-H J1939 SINGLE AXIS INCLINOMETER - CANBUS INTERFACE

DESCRIPTION

Absolute single axis inclinometer sensor based on earth's gravity.

OPERATION

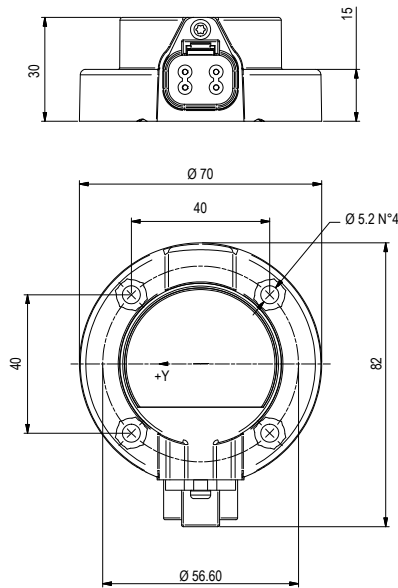
Signal output is linearly proportional to the tilt angle to the ground. With a measurement range of $\pm 90^\circ$ this device is designed to be connected in a CANbus J1939 network (CANOpen optional). It is normally used to control the inclination of a mechanical structure respect to the earth line (e.g. a crane's boom).

FEATURES

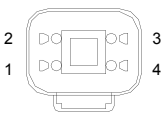
- Supply line is protected against reversed polarity and load dump.
- Outputs are protected against short circuits to GND and supply.
- Microprocessor based.
- Vibration and shock resistant.
- Anti-debouncing software filter.
- Compatible with safety requirements:
 $PL = c$
 $PL = d$ when two inclinometers are installed
- Electro Magnetic Compatibility (EMC): EN 61000-6-2 (Immunity)
 EN 61000-6-3 (Emissions)



DIMENSIONS

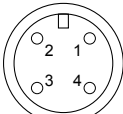


CONNECTIONS



Deutsch DT04-4P

- 1 +VBATT
- 2 GND
- 3 CAN-H
- 4 CAN-L



M12

- 1 +VBATT
- 2 GND
- 3 CAN-H
- 4 CAN-L

SPECIFICATIONS

Operating voltage:	8-32 VDC
Max current consumption:	40 mA
CANbus physical layer:	ISO 11898, 250 kbit/s
CANbus protocol:	J1939
Max working angle for each axis:	$\pm 90^\circ$
Resolution:	0.25°
Operating temperature:	-40°C / +105°C
Degree of protection:	IP 68
Connector type:	Deutsch DT04-4P or M12
Fixing screws included:	n.4 - M5x20
Weight:	120 g (screws included)

APPLICATIONS

- 12 VDC and 24 VDC systems.
- Inclination sensor for telescopic or articulated cranes, and aerial platforms.
- Load and moment limiting systems.

Ordering Code

20.0401.047 with Deutsch connector
20.0401.048 with M12 connector

WARNING: the specifications/application data shown in our catalogs and data sheets are intended only as a general guide for the product described (herein). Any specific application should not be undertaken without independent study, evaluation, and testing for suitability.

EC-SNR-ANG-D3030-H J1939 DUAL AXIS INCLINOMETER (TILT DEVICE) - CANBUS INTERFACE**DESCRIPTION**

Absolute dual axis inclinometer sensor based on earth's gravity.

OPERATION

Signal outputs are linearly proportional to the tilt angle to the ground. With a measurement range of $\pm 30^\circ$ this device is designed to be connected in a CANbus J1939 network (CANOpen optional). It is normally used to control the planarity of chassis or mechanical structure respect to the earth line. Contact Tecnom for the $\pm 90^\circ$ option.

FEATURES

- Supply line is protected against reversed polarity and load dump.
- Outputs are protected against short circuits to GND and supply.
- Microprocessor based.
- Vibration and shock resistant.
- Anti-debouncing software filter.
- Compatible with safety requirements:
 $PL = c$
 $PL = d$ when two inclinometers are installed
- Electro Magnetic Compatibility (EMC): EN 61000-6-2 (Immunity)
 EN 61000-6-3 (Emissions)

SPECIFICATIONS

Operating voltage:	8-32 VDC
Max current consumption:	40 mA
CANbus physical layer:	ISO 11898, 250 kbit/s
CANbus protocol:	J1939
Max working angle for each axis:	$\pm 30^\circ$
Resolution:	0.10°
Operating temperature:	-40°C / +105°C
Degree of protection:	IP 68
Connector type:	Deutsch DT04-4P or M12
Fixing screws included:	n.4 - M5x20
Weight:	120 g (screws included)

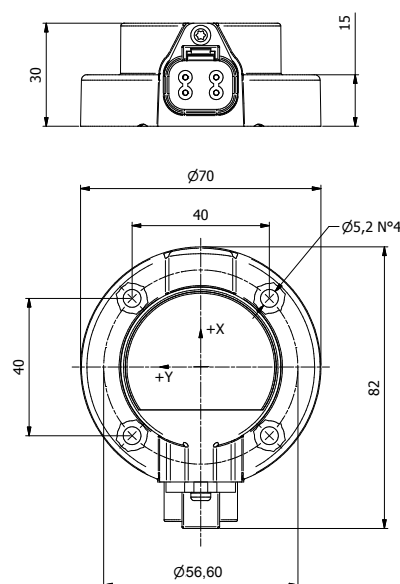
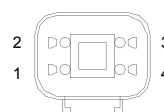
APPLICATIONS

- 12 VDC and 24 VDC systems.
- Automatic self levelling system for trucks, agricultural machines and lift equipment.
- Vehicle tilt monitoring.

Ordering Code

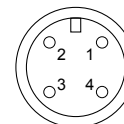
20.0401.045 (Deutsch connector)

20.0401.046 (M12 connector)

**DIMENSIONS****CONNECTIONS**

Deutsch DT04-4P

- 1 +VBATT
- 2 GND
- 3 CAN-H
- 4 CAN-L



M12

- 1 +VBATT
- 2 GND
- 3 CAN-H
- 4 CAN-L

EC-SNR-POS-75S-H SLIP-IN SPOOL POSITION TRANSDUCER**DESCRIPTION**

Position transducer based on Hall effect sensor to detect a stroke of ± 7.5 mm. Slip-in assembly.

OPERATION

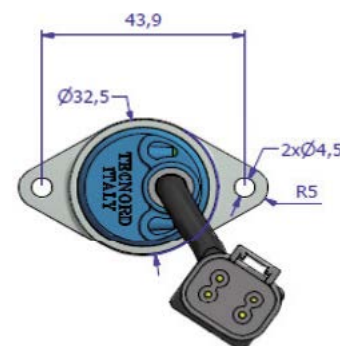
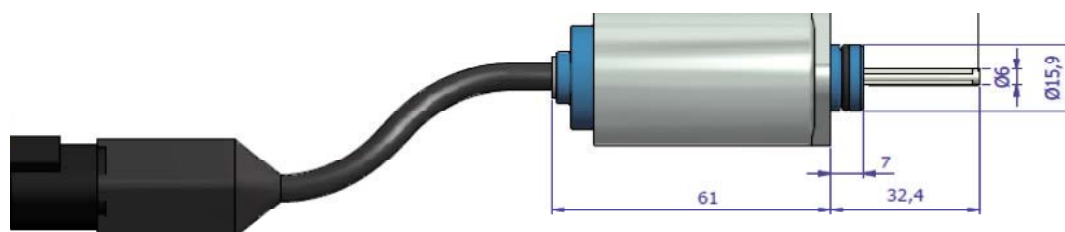
Signal output is linearly proportional to the stroke. With a measurement range of ± 7.5 mm this device provides a 1 to 4 VDC output signal over its range with a nominal 2.5 VDC in the neutral position. It can be used as a safety device in conjunction with Tecnord's MMS electronic units (e.g. MMS 1521).

FEATURES

- Power supply line is protected against reversed polarity and overvoltage.
- Output protected against short circuits to GND and supply.
- Redundant version (dual electronics) available.
- Electro Magnetic Compatibility (EMC): EN 61000-6-2 (Immunity)
EN 61000-6-3 (Emissions)

SPECIFICATIONS

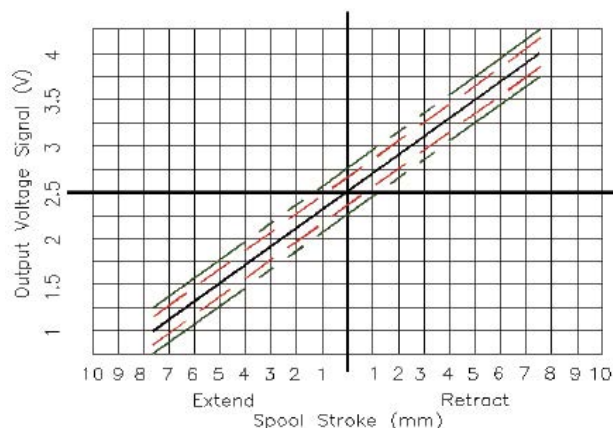
Operating voltage:	6 \pm 32 VDC
Max current consumption:	<15mA
Operating temperature:	-40°C / +85°C
Degree of protection:	IP 67
Maximum operating pressure:	45 bar
Output signal:	1 \pm 2.5 \pm 4 VDC
Tolerance on output signal:	\pm 0.2 VDC
Electrical stroke linearity range:	\pm 7.5 mm
Maximum mechanical stroke:	\pm 8 mm
Connector pins:	1 +V (POWER SUPPLY) 2 -V (POWER SUPPLY-GND) 3 Output signal 4 Not used
Connector type:	Deutsch DT04-4P

DIMENSIONS**APPLICATIONS**

- 12 VDC and 24 VDC systems.
- Spool position detect for electrohydraulic manifolds.

Ordering Code

20.0204.007

**OUTPUT SIGNAL**

EC-SNR-POS-750-H SLIP-IN SPOOL POSITION TRANSDUCER**DESCRIPTION**

Position transducer based on Hall effect sensor to detect a movement from the neutral (zero) position. Slip-in assembly.

OPERATION

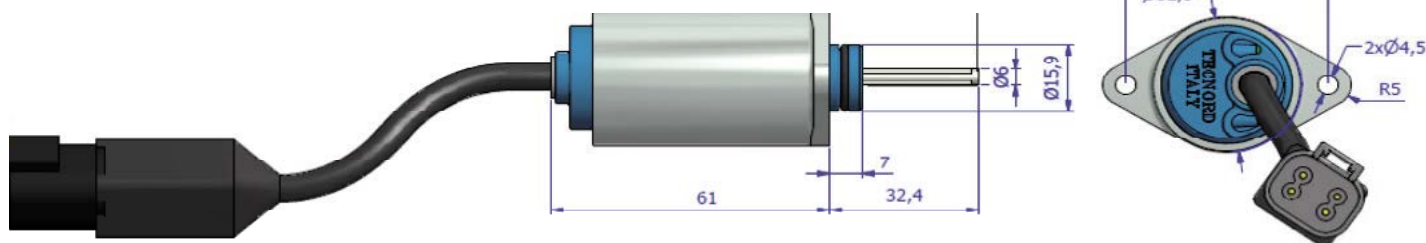
The sensor provides two directional signal outputs, each output becomes active when a movement is detected in its corresponding direction. Outputs are active low. Two low outputs means fault. It can be used as a safety device in conjunction with Tecnord's MMS electronic units (e.g. MMS 1521).

FEATURES

- Power supply line is protected against reversed polarity and overvoltage.
- Output protected against short circuits to GND and supply.
- Redundant version (dual electronics) available.
- Electro Magnetic Compatibility (EMC): EN 61000-6-2 (Immunity)
EN 61000-6-3 (Emissions)

SPECIFICATIONS

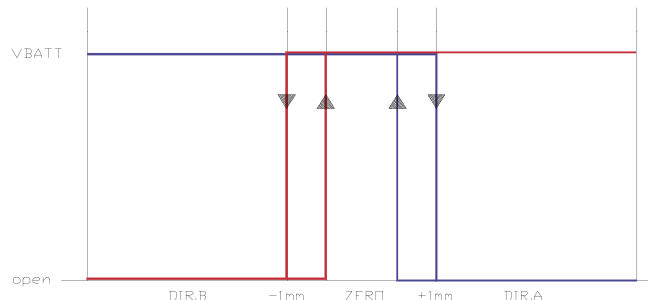
Operating voltage (VBATT):	6÷32 VDC
Max current consumption:	<15mA
Operating temperature:	-40°C / +85°C
Degree of protection:	IP 67
Maximum operating pressure:	45 bar
Output signal (inactive):	open collector (pnp)
Output signal (active):	VBATT
Switching threshold:	1 mm
Maximum mechanical stroke:	±8 mm
Connector pins:	1 +V (POWER SUPPLY) 2 -V (POWER SUPPLY) 3 OUT A 4 OUT B
Connector type:	Deutsch DT04-4P

DIMENSIONS**APPLICATIONS**

- 12 VDC and 24 VDC systems.
- Spool position detect for electrohydraulic manifolds.

Ordering Code

20.0204.006

**OUTPUT SIGNAL**

WARNING: the specifications/application data shown in our catalogs and data sheets are intended only as a general guide for the product described (herein). Any specific application should not be undertaken without independent study, evaluation, and testing for suitability.

EC-SNR-PRX-0102-H PROXIMITY SENSOR**DESCRIPTION**

Heavy duty, high protection proximity sensor based on hall effect.

OPERATION

The sensor can be used to detect the presence of gear teeth and can be used to measure the speed of a rotating shaft.

FEATURES

- Supply line is protected against reversed polarity.

SPECIFICATIONS

Operating voltage:	4÷26 VDC
Max current consumption:	11 mA
Max current output:	20 mA
Operating temperature:	-40°C / +150°C
Degree of protection:	IP68
Mechanical connection:	M18x1.5
Detecting distance:	0.1 - 2 mm
Max frequency for tooth detection:	8 kHz
Output signal:	0 VDC - max V supply
Output type:	NPN or PNP
3 wires cable, 0.75 mm ² section, 200 mm length	

APPLICATIONS

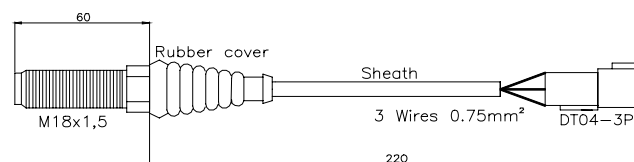
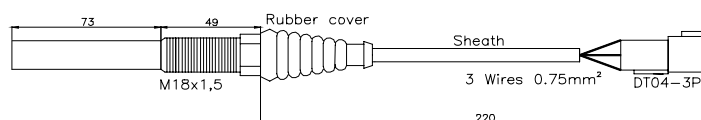
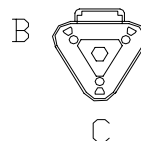
- 12 VDC and 24 VDC systems.
- Transmission speed measurement.
- Stop motion detector and tachometer.

Ordering Code

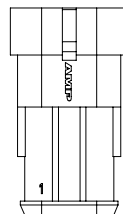
20.0401.006 Type: 68 mm - NPN - Deutsch

20.0401.007 Type: 130 mm - NPN - Deutsch

20.0401.020/A Type: 68 mm - PNP - Amp

**DIMENSIONS****CONNECTIONS****Deutsch DT04-3P**

- A** +V (POWER SUPPLY)
- B** -V (POWER SUPPLY - GND)
- C** OUTPUT SIGNAL

**Amp Superseal 3 poles**

- 1** +V (POWER SUPPLY)
- 2** -V (POWER SUPPLY - GND)
- 3** OUTPUT SIGNAL

WARNING: the specifications/application data shown in our catalogs and data sheets are intended only as a general guide for the product described (herein). Any specific application should not be undertaken without independent study, evaluation, and testing for suitability.

EC-SNR-MDS-H MATERIAL DETECTION SENSOR

DESCRIPTION

Material Detection Sensor based on an optical device, designed for use in an extremely harsh environment, mainly on road salt spreader machines.

OPERATION

When the material from the “Spinner” flows in front of the optical device the output signal goes ON (+V). When no material flows, the output signal goes OFF (open). Above all used in conjunction with the Tecnord Ecomatic salt spreader control systems.

FEATURES

- Supply line protected against reversed polarity and overvoltage.
- Output protected against short circuits to GND and supply.
- Electro Magnetic Compatibility (EMC): EN 61000-6-2 (Immunity)
EN 61000-6-3 (Emissions)

SPECIFICATIONS

Operating voltage:	10÷36 VDC
Max current consumption:	25mA
Operating temperature:	-25°C / +80°C
Degree of protection:	IP 67
Digital output:	PNP type
Max output current:	150mA
Detection zone:	<200 mm
Connection:	3 Wire leads colored

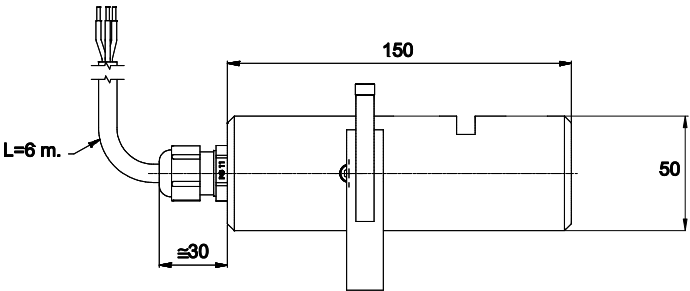
APPLICATIONS

- MDS sensor for salt spreader systems.
- MDS sensor for agricultural spreader systems (e.g. fertilizers).

Ordering Code
20.0401.055/A



DIMENSIONS



CONNECTIONS

- Flying wires
- BROWN** +V (POWER SUPPLY)
 - BLUE** -V (POWER SUPPLY - GND)
 - BLACK** OUTPUT SIGNAL

WARNING: the specifications/application data shown in our catalogs and data sheets are intended only as a general guide for the product described (herein). Any specific application should not be undertaken without independent study, evaluation, and testing for suitability.

CONNECTOR KITS

ACCESSORIES

3 POLES AMP SUPERSEAL

Kit includes: male connector, female contacts, and fillers.

Available for sensor: EC-SNR-POS-55-H

ORDERING CODE: **13.0310.127**

**4 POLES AMP SUPERSEAL**

Kit includes: male connector, female contacts, and fillers.

Available for sensor: EC-SNR-POS-75-H

ORDERING CODE: **13.0310.542**

**3 POLES DEUTSCH DT06-3S**

Kit includes: male connector, female contacts, secondary lock and fillers.

Available for sensor: EC-SNR-PRX-0102-H

ORDERING CODE: **13.0310.394**

**4 POLES DEUTSCH DT06-4S**

Kit includes: male connector, female contacts, secondary lock and fillers.

Available for sensor: EC-SNR-ANG-S9090-H, EC-SNR-ANG-D3030-H, EC-SNR-EOM-H

ORDERING CODE: **13.0310.132**

**8 POLES DEUTSCH DT06-8S**

Kit includes: male connector, female contacts, secondary lock and fillers.

Available for sensor: EC-SNR-LA-1290-H

ORDERING CODE: **13.0310.432**

